

# ALBA Software Notes

## Carbon Dioxide Gas Sensor

- The Carbon Dioxide gas sensor is produced by Vernier International and has been modified to run on the ALBA Interface and Logger.
- The notes on this sheet should be read in conjunction with the notes from Vernier on their Carbon Dioxide gas sensor.
- The Carbon Dioxide gas sensor must be used with version 1.90 or greater of the ALBA Core software.

The Carbon Dioxide gas sensor is supplied with

- Nalgene Bottle
- The Vernier instruction booklet

### Getting Started

Connect the carbon Dioxide gas sensor to channel 3 or 4 on the ALBA Interface and Logger and leave it to warm up for at least 90 seconds .

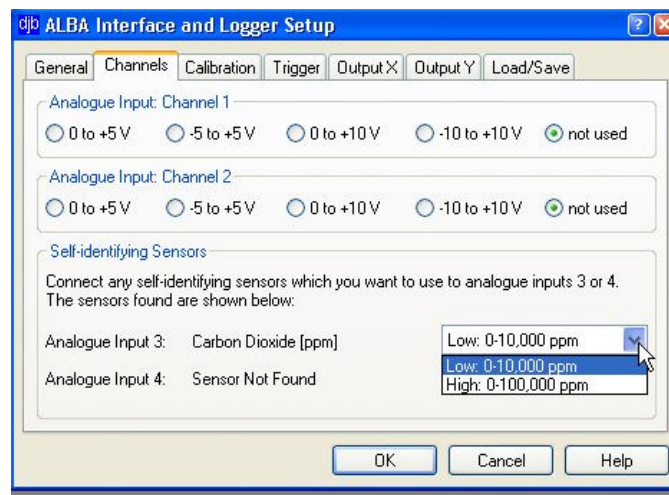
Note that this sensor differs from the earlier version by having two ranges:

Low : 0-10,000 ppm

High : 0 – 100,000 ppm

**For all Applications on Biology Disk1, Chemistry Disk 1, and Science Basics Disk 1 use the Low range.**

If you are using the Investigator then you will be able to select the low or high range to suit your experiment.



djb microtech have found it advantageous to calibrate the sensor before use. Notes on the calibration procedure are given in the Vernier sheet.

## djb microtech ltd

**Delfie House, 1 Delfie Drive, Greenock, Renfrewshire, PA16 9EN**

Phone: 01475 786540

Website: [www.djb.co.uk](http://www.djb.co.uk)

Email: [info@djb.co.uk](mailto:info@djb.co.uk)